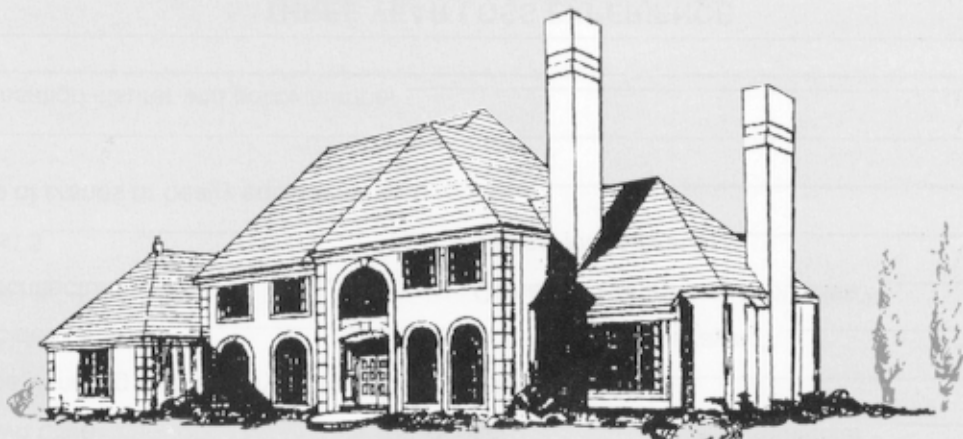


Dig Up Prospects with our Landscapers Program

We have an in-house binding authority program
with an "A" rated company.



- ★ New ventures are eligible
- ★ Limits up to \$3 million per occurrence/\$3 million general aggregate including traditional "Broad Form" CGL coverages
- ★ Care, Custody, and Control Property Damage Extension available
- ★ Inland Marine coverage available for mobile equipment
- ★ Part-time and seasonal operations



CALL US TO
"RAKE UP" A QUOTE!